

# Alaska Department of Fish and Game

Habitat Section  
Southeast Region



## 112-50-10100 Tributary 5

## ADDITION

**Water body name:**

**Quad:** Sitka D-4

**Upper Reach Latitude:** 57.850448 **Longitude:** -135.167399

**Lower Reach Latitude:** 57.851739 **Longitude:** -135.164037

**Survey date:** 8/30/2022

**Species & Lifestage:**

**Survey crew:** FC, RR

**Findings:** We surveyed this uncataloged stream using a backpack electrofisher, baited minnow traps, and GPS. We captured juvenile coho salmon and Dolly Varden. The tributary stream has some braiding just upstream of where it flows through a 5 ft wide culvert (Table 1; Figures 1–3).

**Recommendations:** Add this uncataloged stream to the anadromous waters catalog for rearing coho salmon (Figure 4).

**Nomination:** Pending

Table 1.—112-50-10100 tributary 5 survey data.

Waypoint	Latitude	Longitude	Notes	Stream Width ft	Stream Substrate	Habitat Features	Gradient %	Sample Effort	Sample Results
1626	57.850760	-135.167318	5' wide CMP with 2-4% gradient through, gravel and cobble sediment in pipe. Minnow trap soaked just downstream of pipe overnight. Minnow trap blown out due to high flows. Sampled via electrofisher; 1-yr and 2-yr CO capture just downstream of culvert.	12-15	Small Gravel Large Gravel		2-4	EF	2 CO 1 DV
1640	57.850452	-135.167419	Braid paralleling road turns back into woods here. Continued 1-yr CO capture upstream of culvert.					EF	2 CO
1641	57.850648	-135.167496	Immediately upstream of culvert braids with one side following ditch parallel to road; rejoins ~75' upstream.						



Figure 1.— Juvenile coho salmon captured at waypoint 1626.



Figure 2.—Downstream view of channel at waypoint 1626.



Figure 3.—Culvert outlet at waypoint 1626.



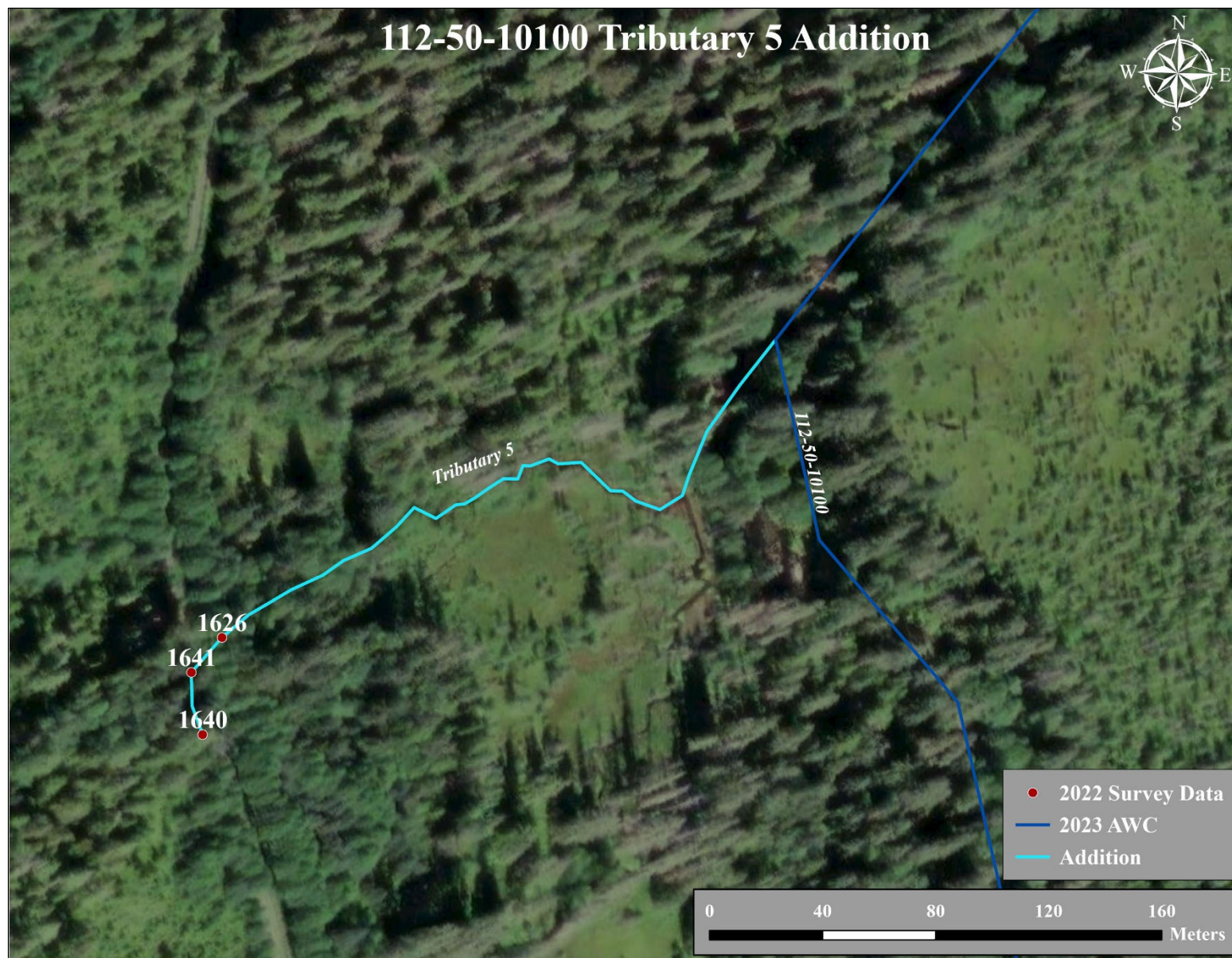


Figure 4.–112-50-10100 tributary 5 addition map.